



**High Definition  
Panoramic Dental X-Ray Unit**

Certified & approved By:

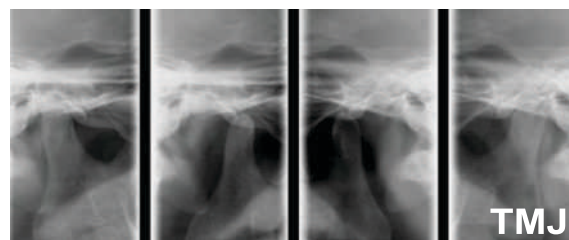
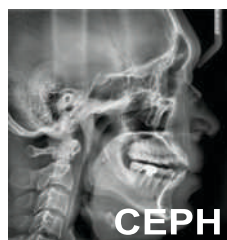


CML-5182251

# Technical Specifications

S.No.	PARAMETER	EP DENTO
01.	Generator	Two Pulse Generator, Full Wave Rectified
02.	Console	Microcontroller Based, Soft Touch Pannel, 20x4 LCD Display (146x63mm)
03.	APR Facility	Available
04.	OPG Tube Imported	OPX - 105 Make : CEI or KL - 5 Make : Wanray
05.	Tube Current	10mA
06.	Tube Voltage	55 Kvp to 90 Kvp (in 1 Kvp steps)
07.	Tube Focal Spot	0.4 mmsq. Fine Focus
08.	Total Filtration	2.5 mm Aluminum
09.	Exposure Time	PAN : 17 Second, TMJ : 4x4 Second, CEPH : 60mAS
10.	Patient Position	Laser Marking
11.	Centering Reference	Chin Rest with Bite Rod
12.	Remote	Light weight, Easy Operation for Exposure, Test Run, Reset & Centre Light
13.	Cassette Size	OPG & TMJ - 6"x12" and 10"x12", Ceph - 8"x10" and 10"x12"
14.	Cassette Type	Flat (Analog / Digital)
15.	Safety Features	Automatic Exposure Termination, Automatic Audible and Visible Error Alarm
16.	Cephalogram	AP / PA / LAT View
17.	Magnification	OPG - 1.2 CEPH - 1.1
18.	Voltage Regulation	Double Stage CVT Regulation
19.	Power Required	1Ø 200 / 220 / 240VAC with 15 Amps Power Socket
20.	Max. Line Current	5 Amp
21.	Max. Power	900 Watt
22.	Unit Dimensions	With Ceph - 230x175x95 cm, Without Ceph - 230x80x95 cm
23.	Weight	200 Kg (Approx)
24.	Column Height	Min 5'.8" to 7'.8" Max Adjustable upto 2 Ft.

Due to continuous R & D for product development and improvement design, specifications, appearance & Data indicated might be vary from the product illustrated in the catalogue.



## HEMANT SURGICAL INDUSTRIES LTD

502, 5th Floor, Ecstasy Commercial Park, Citi Of Joy, JSD Road,  
Mulund West, Mumbai, Maharashtra - 400080

Email - [Monil.g@hemantsurgical.com](mailto:Monil.g@hemantsurgical.com) , [niyati@hemantsurgical.com](mailto:niyati@hemantsurgical.com)

Contact - +91 8104729765 / +91 9323969232 / +91 9619484952

Website - [www.hemantsurgical.com](http://www.hemantsurgical.com)